

CUTTER BLOCKS
HSS Knives / Carbide Tipped

PRODUCT CATEGORY	PAGE NO.
COMBI-CUT SOLID CARBIDE KNIVES AND BACKERS	C25 - C26
CORRUGATED BACK KNIVES	C21 - C24
CORRUGATED TOOLHEADS	C7 - C8
HYDRO-BORE CORRUGATED TOOLHEADS	C9 - C10
HYDRO-BORE PLANING HEADS	C11 - C12
HYDRO-GRIP SLEEVES - INTERCHANGEABLE	C15 - C20
HYDRO-GRIP SLEEVES - PERMANENT	C13 - C14
INTERCHANGEABLE MINI-FINGER JOINT	C3 - C4
MULTI DOWEL CUTTER	C1 - C2
PLANING HEADS	C5 - C6
PLANING KNIVES - CARBIDE TIPPED	C30 - C32
PLANING KNIVES - DISPOSABLE DOUBLE-EDGED	C29
PLANING KNIVES - FOR PORTABLE MACHINES - CARBIDE TIPPED AND HSS	C33
PLANING KNIVES - M2 STEEL - HSS	C28
PLANING KNIVES - T1 STEEL - HSS	C27

PART NO.	PAGE NO.
186A11 - 186A14	C03
186A50 - 186A66	C04
18812 - 18869-12	C7 - C8
1901012 - 1902622	C9
1901022 - 1924622	C11
1903012 - 1905622	C10
20160354 - 20317354	C33
2076203 - 2092303	C33
2110293 - 2155323	C33
25120303 - 25640353	C27
26040051 - 26370145	C28
2610114 - 2611300	C21
2611112ST - 2611234ST	C22
2710114 - 2711300	C22
29H060 - 299810	C29
2M82293 - 2S82293	C33
30040051 - 30122071	C32
30060253 - 30510253	C31
30060303 - 30810303	C31
30060353 - 30810353	C31
30131065 - 30300141	C32
30156313 - 30317354	C33
3030A04038 - 3030A23060	C26
3030C04038 - 3030C23060	C26
3030S04038 - 3030S23060	C26
3071183 - 3092303	C33
3110293 - 3170353	C33
3M82293 - 3S82293	C33
A-40/60-55 - A-2 1/8"/65-55	C13
AI-40/50-55 - AI-2 1/8"/65-55	C14
B-1 1/2"/50-85 - B-2 1/8"/65-185	C16
B-40/50-75 - B-60/70-190	C15
BI-40/50-75 - BI-2 1/8"/65-85	C17
CI-40/50-75 - CI-50/60-140	C18
DX10114 - DX11300	C21


DESIGN:

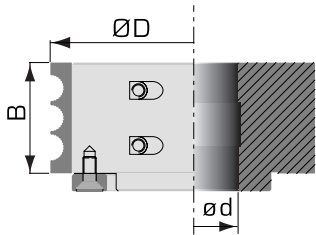
- » High tensile steel body with 3 teeth
- » The knife locking system is very precise due to the positioning ring mounted on each toolhead
- » Solid HSS knives are resharpenable and replaceable
- » For higher performance, knives with titanium nitride coating [tin] available on request

APPLICATION:

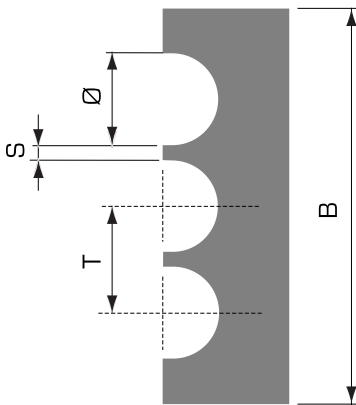
- » For producing smooth dowels from 6mm to 16mm diameter

MACHINE TYPE:

- » On moulders


TOOLHEADS: SPECIAL PRODUCTION

DIAM. ØD MM	KERF B	MAX BORE ØD	NO. TEETH	MAX. RPM
110mm	50mm, 75mm, 100mm or 125mm	50mm	3	10000
4-3/8"	2", 3", 4" or 5"	2"	3	10000


KNIVES FOR SMOOTH DOWELS: SPECIAL PRODUCTION

DOWEL DIAM. Ø MM	SPLITTER SIZE S MM	PITCH T MM	NO. OF DOWELS	KERF B MM	CUTTING DIAM. ØD MM
6	1	7	6	50	138
8	1	9	4	50	138
10	1	11	3	50	138
12	1.5	13.5	3	50	148
14	1.5	15.5	2	50	148
16	1.5	17.5	2	50	148
6	1	7	9	75	138
8	1	9	7	75	138
10	1	11	5	75	138
12	1.5	13.5	5	75	148
14	1.5	15.5	4	75	148
16	1.5	17.5	3	75	148
6	1	7	12	100	138
8	1	9	10	100	138
10	1	11	8	100	138
12	1.5	13.5	6	100	148
14	1.5	15.5	5	100	148
16	1.5	17.5	5	100	148
6	1	7	16	125	138
8	1	9	13	125	138
10	1	11	10	125	138
12	1.5	13.5	8	125	148
14	1.5	15.5	7	125	148
16	1.5	17.5	6	125	148



**DESIGN:**

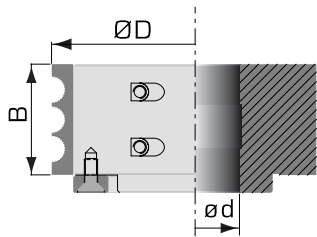
- » High tensile steel body with 3 teeth
- » The knife locking system is very precise due to the positioning ring mounted on each toolhead
- » Solid HSS knives are resharpenable and replaceable
- » For higher performance, knives with titanium nitride coating [tin] available on request

APPLICATION:

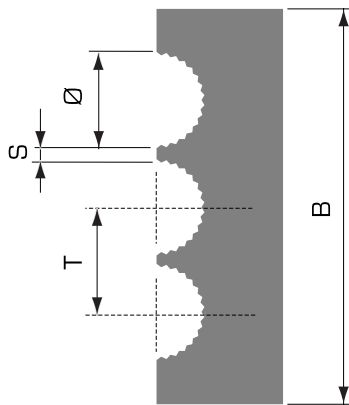
- » For producing serrated dowels from 6.2mm to 16.2mm diameter

MACHINE TYPE:

- » On moulders

**TOOLHEADS: SPECIAL PRODUCTION**

DIAM. ØD MM	KERF B	MAX BORE ØD	NO. TEETH	MAX.RPM
110mm	50mm, 75mm, 100mm or 125mm	50mm	3	10000
4-3/8"	2", 3", 4" or 5"	2"	3	10000

**KNIVES FOR SMOOTH DOWELS: SPECIAL PRODUCTION**

DOWEL DIAM. Ø MM	SPLITTER SIZE S MM	PITCH T MM	NO. OF SERRATIONS	NO. OF DOWELS	KERF B MM	CUTTING DIAM. ØD MM
6.2	1	7.2	16	6	50	138
8.2	1	9.2	20	4	50	138
10.2	1	11.2	22	3	50	138
12.2	1.5	13.7	22	3	50	148
14.2	1.5	15.7	22	2	50	148
16.2	1.5	17.7	22	2	50	148
6.2	1	7.2	16	9	75	138
8.2	1	9.2	20	7	75	138
10.2	1	11.2	22	5	75	138
12.2	1.5	13.7	22	5	75	148
14.2	1.5	15.7	22	4	75	148
16.2	1.5	17.7	22	3	75	148
6.2	1	7.2	16	12	100	138
8.2	1	9.2	20	10	100	138
10.2	1	11.2	22	8	100	138
12.2	1.5	13.7	22	6	100	148
14.2	1.5	15.7	22	5	100	148
16.2	1.5	17.7	22	5	100	148
6.2	1	7.2	16	16	125	138
8.2	1	9.2	20	13	125	138
10.2	1	11.2	22	10	125	138
12.2	1.5	13.7	22	8	125	148
14.2	1.5	15.7	22	7	125	148
16.2	1.5	17.7	22	6	125	148




DESIGN:

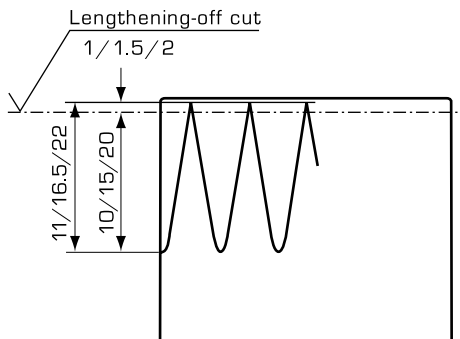
- » High tensile steel body requires 4 knives, not included with toolhead
- » Tools can be stacked based on the wood thickness to be cut
- » Solid HSS knives are resharpenable and exchangeable
- » Knives can be coated with a special PVD surface coating for longer tool life

APPLICATION:

- » For finger joints in solid wood
- » When ordering, specify 'Interchangeable Mini-Finger Joint Knives' and 'Bore Size'
- » For machines with lengthening-off device (TrimSaw), finger length will be 11mm, 16.5mm or 22mm. By means of the lengthening-off device, the machined finger length may be between 10 and 11mm, 15 and 16.5mm or 20 and 22mm according to requirements for fitting and strength of joint
- » If not stated otherwise, cutters will be supplied to suit machines without lengthening-off devices

MACHINE TYPE:

- » On finger jointing machines with or without lengthening-off device

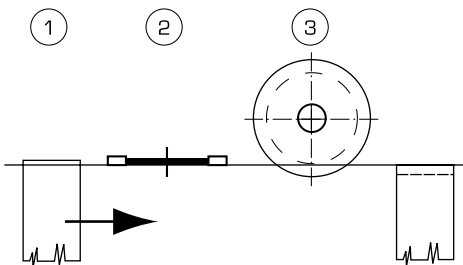


If not stated otherwise, cutters will be supplied to suit machines without lengthening-off device

PART NO.	JOINT LENGTH MM	DIAM. ØD MM	KERF B MM	BORE ØD	NO. TEETH	MAX. RPM
186A11	4	160	25.6	1-1/4"	4	8000
186A12	10	160	30.4	1-1/4"	4	8000
186A13	15	170	30.4	1-1/4"	4	8000
186A14	20	180	37.2	1-1/4"	4	7000

Max. bore size 50mm (2")

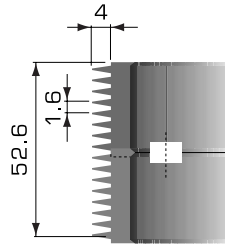
Other bore sizes and diameters available upon request



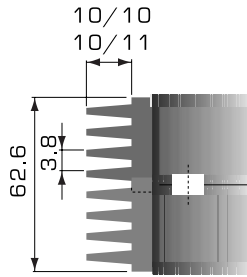
1. Timber
2. Lengthening-off device (Trim Saw)
3. Mini finger joint cutter

**TOOLHEAD
PART NO.**

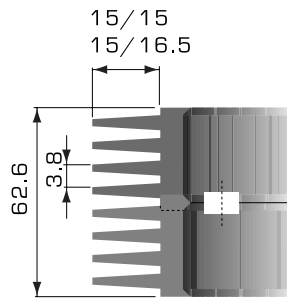
[186A50]



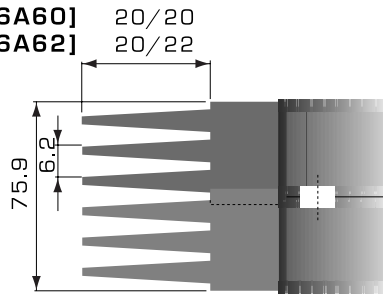
[186A52]
[186A54]



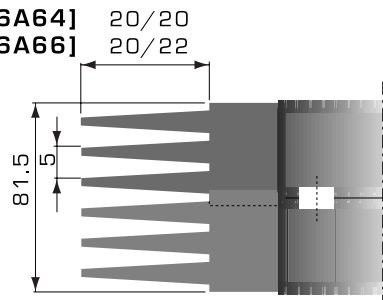
[186A56]
[186A58]



[186A60]
[186A62]



[186A64]
[186A66]



PART NO.	JOINT LENGTH MM	LENGTHENING OFF DEVICE (A)	PITCH MM	KNIFE SIZE MM
186A50	4	No	1.6	25.4 x 33 x 14
186A52	10-10	No	3.8	28.4 x 38.5 x 14
186A54	10-11	Yes	3.8	28.4 x 38.5 x 14
186A56	15-15	No	3.8	28.4 x 43.5 x 14
186A58	15-16.5	Yes	3.8	28.4 x 43.5 x 14
186A60	20-20	No	6.2	32.5 x 48.5 x 14
186A62	20-22	Yes	6.2	32.5 x 48.5 x 14
186A64	20-20	No	5.0	36.5 x 48.5 x 14
186A66	20-22	Yes	5.0	36.5 x 48.5 x 14

JOINT LENGTH MM	WOOD THICKNESS MM	NO. TOOLHEADS	TOTAL KERF MM
4	1.6mm PITCH	1	27.0
4		2	52.6
4		3	78.2
4		4	103.8
4		5	129.4
10 & 15	3.8mm PITCH	1	32.2
10 & 15		2	62.6
10 & 15		3	93.0
10 & 15		4	123.4
10 & 15		5	153.8
20	6.2mm PITCH	1	38.7
20		2	75.9
20		3	113.1
20		4	150.3
20		5	187.5
20	5mm PITCH	1	41.5
20		2	81.5
20		3	121.5
20		4	161.5
20		5	201.5


DESIGN:

- » High tensile steel body with 4 teeth
- » Supplied with T1 steel knives 30 x 3mm
- » Positioning of knives requires use of appropriate gauge
- » Can also be supplied with TCT knives [priced separately]

APPLICATION:

- » With HSS knives for planing solid woods without glue lines
- » With tungsten carbide tipped knives for planing hardwoods, exotic woods and solid woods with glue lines

MACHINE TYPE:

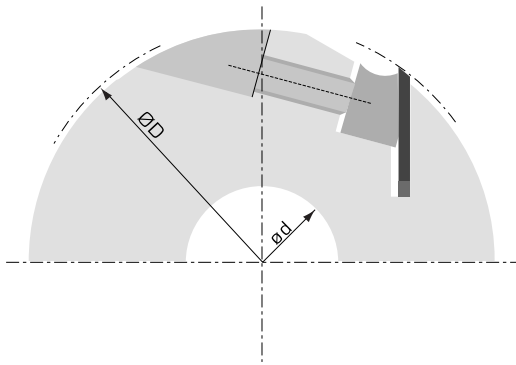
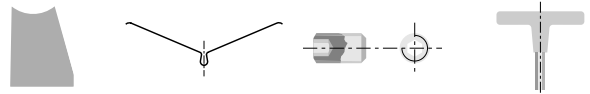
- » On moulders and four sided planers

SPECIAL PRODUCTION

DIAM. ØD	KERF	MAX BORE ØD	NO. TEETH	MAX. RPM
125mm 5"	100mm 4"	50mm 2"	4	9000
125mm 5"	120mm 4-3/4"	50mm 2"	4	9000
125mm 5"	130mm 5-1/8"	50mm 2"	4	9000
125mm 5"	150mm 6"	50mm 2"	4	9000
125mm 5"	180mm 7"	50mm 2"	4	9000
125mm 5"	210mm 8-1/4"	50mm 2"	4	9000
125mm 5"	230mm 9"	50mm 2"	4	9000

Other sizes available upon request

For replacement knives, see HSS or TCT Planing Knives catalogue pages C25 - C30


REPLACEMENT PARTS


TOOLHEAD KERF	WEDGE PART NO.	SPRING PART NO.	WEDGE SCREW PART NO.	WRENCH PART NO.
100mm 4"	W301109	W501602	W501309	W400004
120mm 4-3/4"	W301111	W501602	W501309	W400004
130mm 5-1/8"	W301112	W501602	W501309	W400004
150mm 6"	W301114	W501602	W501309	W400004
180mm 7"	W301117	W501602	W501309	W400004
210mm 8-1/4"	W301120	W501602	W501309	W400004
230mm 9"	W301122	W501602	W501309	W400004


DESIGN:

- » Aluminum body with 4 teeth
- » Supplied with T1 steel knives 30 x 3mm
- » Positioning of knives requires use of appropriate gauge
- » Can also be supplied with TCT knives [priced separately]

APPLICATION:

- » With HSS knives for planing solid woods without glue lines
- » With tungsten carbide tipped knives for planing hardwoods, exotic woods and solid woods with glue lines

MACHINE TYPE:

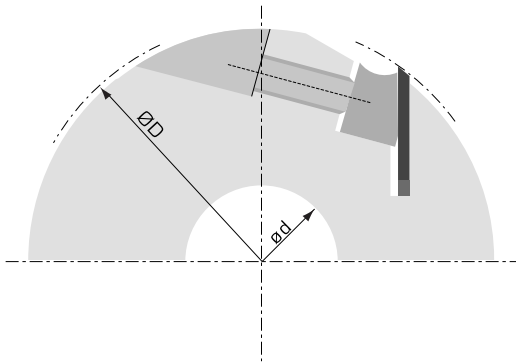
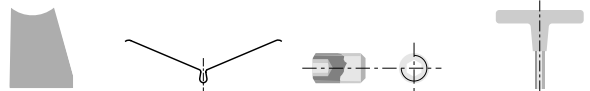
- » On moulders and four sided planers

SPECIAL PRODUCTION

DIAM. ØD	KERF	MAX BORE ØD	NO. TEETH	MAX. RPM
125mm 5"	100mm 4"	50mm 2"	4	9000
125mm 5"	120mm 4-3/4"	50mm 2"	4	9000
125mm 5"	130mm 5-1/8"	50mm 2"	4	9000
125mm 5"	150mm 6"	50mm 2"	4	9000
125mm 5"	180mm 7"	50mm 2"	4	9000
125mm 5"	210mm 8-1/4"	50mm 2"	4	9000
125mm 5"	230mm 9"	50mm 2"	4	9000

Other sizes available upon request

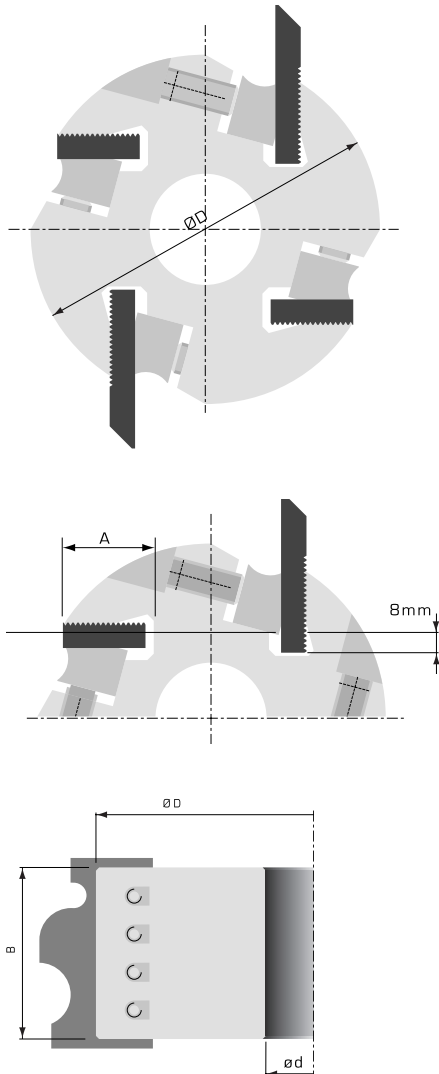
For replacement knives see HSS or TCT Planing Knives; Catalogue pages C25 - C30


REPLACEMENT PARTS


TOOLHEAD KERF	WEDGE PART NO.	SPRING PART NO.	WEDGE SCREW PART NO.	WRENCH PART NO.
100mm 4"	W301109	W501602	W501309	W400004
120mm 4-3/4"	W301111	W501602	W501309	W400004
130mm 5-1/8"	W301112	W501602	W501309	W400004
150mm 6"	W301114	W501602	W501309	W400004
180mm 7"	W301117	W501602	W501309	W400004
210mm 8-1/4"	W301120	W501602	W501309	W400004
230mm 9"	W301122	W501602	W501309	W400004



A = 25mm for 4" diam.
A = 28mm for 4-3/4" diam. and over

**DESIGN:**

- » High tensile steel body with 4 teeth
- » Available in 22° or 12° hook angle
- » Precise serration (60°, 1.6mm pitch) ensures tight and accurate positioning of knives

APPLICATION:

- » For profiling of solid woods using HSS knives (see pages C21 - C22)
- » For profiling MDF and other abrasive materials carbide tipped knives are required (see pages C23 - C24)

MACHINE TYPE:

- » On moulders

PART NO. 22° HOOK	PART NO. 12° HOOK	DIAM. ØD	KERF B	BORE ød	NO. TEETH	MAX. RPM
18812	-	101.6mm 4"	50mm 2"	31.75mm 1-1/4"	4	11000
18813	-	101.6mm 4"	76.2mm 3"	31.75mm 1-1/4"	4	11000
18814	-	101.6mm 4"	101.6mm 4"	31.75mm 1-1/4"	4	11000
18822	18822-12	122mm 4-3/4"	50mm 2"	38.1mm 1-1/2"	4	9000
18823	18823-12	122mm 4-3/4"	80mm 3-1/8"	38.1mm 1-1/2"	4	9000
18824	18824-12	122mm 4-3/4"	100mm 4"	38.1mm 1-1/2"	4	9000
18825	18825-12	122mm 4-3/4"	130mm 5-1/8"	38.1mm 1-1/2"	4	9000
18826	18826-12	122mm 4-3/4"	150mm 6"	38.1mm 1-1/2"	4	9000
18828	18828-12	122mm 4-3/4"	180mm 7"	38.1mm 1-1/2"	4	9000
18830	18830-12	122mm 4-3/4"	230mm 9"	38.1mm 1-1/2"	4	9000
18832	18832-12	122mm 4-3/4"	50mm 2"	40mm 1.575"	4	9000
18833	18833-12	122mm 4-3/4"	80mm 3-1/8"	40mm 1.575"	4	9000
18834	18834-12	122mm 4-3/4"	100mm 4"	40mm 1.575"	4	9000
18835	18835-12	122mm 4-3/4"	130mm 5-1/8"	40mm 1.575"	4	9000
18836	18836-12	122mm 4-3/4"	150mm 6"	40mm 1.575"	4	9000
18837	18837-12	122mm 4-3/4"	180mm 7"	40mm 1.575"	4	9000
18839	18839-12	122mm 4-3/4"	230mm 9"	40mm 1.575"	4	9000

Continued to page C8...



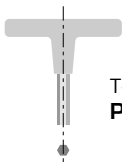
...Continued from page C7

PART NO. 22° HOOK	PART NO. 12° HOOK	DIAM. ØD	KERF B	BORE ød	NO. TEETH	MAX. RPM
18842	18842-12	122mm 4-3/4"	50mm 2"	46.04mm 1-13/16"	4	9000
18843	18843-12	122mm 4-3/4"	80mm 3-1/8"	46.04mm 1-13/16"	4	9000
18844	18844-12	122mm 4-3/4"	100mm 4"	46.04mm 1-13/16"	4	9000
18845	18845-12	122mm 4-3/4"	130mm 5-1/8"	46.04mm 1-13/16"	4	9000
18846	18846-12	122mm 4-3/4"	150mm 6"	46.04mm 1-13/16"	4	9000
18852	18852-12	137mm 5-3/8"	50mm 2"	46.04mm 1-13/16"	4	8000
18853	18853-12	137mm 5-3/8"	80mm 3-1/8"	46.04mm 1-13/16"	4	8000
18854	18854-12	137mm 5-3/8"	100mm 4"	46.04mm 1-13/16"	4	8000
18855	18855-12	137mm 5-3/8"	130mm 5-1/8"	46.04mm 1-13/16"	4	8000
18856	18856-12	137mm 5-3/8"	150mm 6"	46.04mm 1-13/16"	4	8000
18857	18857-12	137mm 5-3/8"	180mm 7"	46.04mm 1-13/16"	4	8000
18859	18859-12	137mm 5-3/8"	230mm 9"	46.04mm 1-13/16"	4	8000
18862	18862-12	137mm 5-3/8"	50mm 2"	40mm 1.575"	4	8000
18863	18863-12	137mm 5-3/8"	80mm 3-1/8"	40mm 1.575"	4	8000
18864	18864-12	137mm 5-3/8"	100mm 4"	40mm 1.575"	4	8000
18865	18865-12	137mm 5-3/8"	130mm 5-1/8"	40mm 1.575"	4	8000
18866	18866-12	137mm 5-3/8"	150mm 6"	40mm 1.575"	4	8000
18867	18867-12	137mm 5-3/8"	180mm 7"	40mm 1.575"	4	8000
18869	18869-12	137mm 5-3/8"	230mm 9"	40mm 1.575"	4	8000

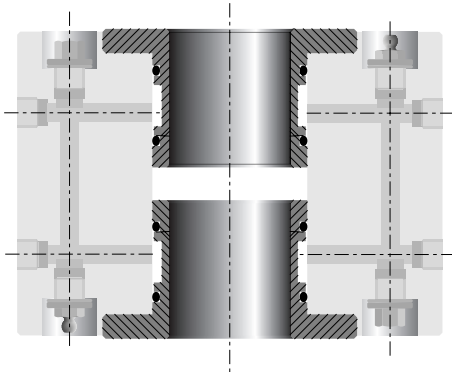
REPLACEMENT PARTS



TOOLHEAD KERF	WEDGE PART NO.	WEDGE SCREW PART NO.
50mm 2"	W301104	W501305
80mm 3-1/8"	W301107	W501305
100mm 4"	W301109	W501305
130mm 5-1/8"	W301112	W501305
150mm 6"	W301114	W501305
180mm 7"	W301117	W501305
230mm 9"	W301122	W501305



T-HANDLE ALLEN WRENCH
PART NO. W400115 5mm



Grease fittings mounted on both ends of toolheads for easy access.

DESIGN:

- » High tensile steel body with 4, 6 or 8 teeth
- » Available in 22° or 12° hook angle
- » Precise serration (60°, 1.6mm pitch) ensure tight and accurate positioning of knives
- » With dual-chamber hydro-clamping to ensure precise concentricity tolerance
- » High radial running accuracy and low operating vibration

APPLICATION:

- » For profiling at high feed rates with superior surface finish
- » Use HSS or Stellite tipped knives for solid woods (see pages C21 - C22)
- » Use carbide tipped knives for exotic woods and MDF (see pages C23 - C24)

MACHINE TYPE:

- » On moulders

PART NO. 22° HOOK	PART NO. 12° HOOK	DIAM. ØD	KERF B	BORE ØD	NO. TEETH	MAX. RPM
1901022	1901012	137mm 5-3/8"	60mm 2-3/8"	1-1/2" 40mm	4	8900
1901122	1901112	137mm 5-3/8"	80mm 3-1/8"		4	8900
1901222	1901212	137mm 5-3/8"	100mm 4"		4	8900
1901322	1901312	137mm 5-3/8"	130mm 5-1/8"		4	8900
1901422	1901412	137mm 5-3/8"	150mm 6"		4	8900
1901522	1901512	137mm 5-3/8"	180mm 7"		4	8900
1901622	1901612	137mm 5-3/8"	230mm 9"		4	8900
1902022	1902012	150mm 6"	60mm 2-3/8"	1-1/2", 1-13/16", 2-1/8" 40mm, 50mm	4	8000
1902122	1902112	150mm 6"	80mm 3-1/8"		4	8000
1902222	1902212	150mm 6"	100mm 4"		4	8000
1902322	1902312	150mm 6"	130mm 5-1/8"		4	8000
1902422	1902412	150mm 6"	150mm 6"		4	8000
1902522	1902512	150mm 6"	180mm 7"		4	8000
1902622	1902612	150mm 6"	230mm 9"		4	8000

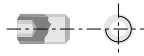
Continued to page C10...



...Continued from page C9

REPLACEMENT PARTS

PART NO.	DESCRIPTION	PRODUCT
W500605	Screw for flanges M6 x 16mm	
W501810	Grease Nipple	
W501811	Release Valve	
1T463HP	Grease Gun	
W400113	Wrench 3mm	
W400115	Wrench 5mm	

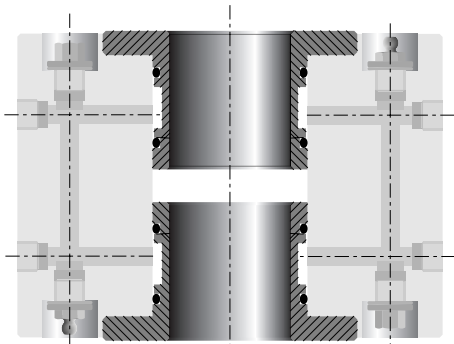


TOOLHEAD KERF	WEDGE PART NO.	WEDGE SCREW PART NO.
60mm (2-3/8")	W301805	W501409
80mm (3-1/8")	W301807	W501409
100mm (4")	W301809	W501409
130mm (5-1/8")	W301812	W501409
150mm (6")	W301814	W501409
180mm (7")	W301817	W501409
230mm (9")	W301822	W501409

PART NO. 22° HOOK	PART NO. 12° HOOK	DIAM. ØD	KERF B	BORE ØD	NO. TEETH	MAX. RPM
1903022	1903012	150mm 6"	60mm 2-3/8"	1-1/2", 1-13/16", 2-1/8" 40mm, 50mm	6	8000
1903122	1903112	150mm 6"	80mm 3-1/8"		6	8000
1903222	1903212	150mm 6"	100mm 4"		6	8000
1903322	1903312	150mm 6"	130mm 5-1/8"		6	8000
1903422	1903412	150mm 6"	150mm 6"		6	8000
1903522	1903512	150mm 6"	180mm 7"		6	8000
1903622	1903612	150mm 6"	230mm 9"		6	8000
1904022	1904012	163mm 6-3/8"	60mm 2-3/8"	1-13/16", 2-1/8" 50mm	6	7600
1904122	1904112	163mm 6-3/8"	80mm 3-1/8"		6	7600
1904222	1904212	163mm 6-3/8"	100mm 4"		6	7600
1904322	1904312	163mm 6-3/8"	130mm 5-1/8"		6	7600
1904422	1904412	163mm 6-3/8"	150mm 6"		6	7600
1904522	1904512	163mm 6-3/8"	180mm 7"		6	7600
1904622	1904612	163mm 6-3/8"	230mm 9"		6	7600
1905022	1905012	163mm 6-3/8"	60mm 2-3/8"		8	7600
1905122	1905112	163mm 6-3/8"	80mm 4"		8	7600
1905222	1905212	163mm 6-3/8"	100mm 2-3/8"		8	7600
1905322	1905312	163mm 6-3/8"	130mm 5-1/8"		8	7600
1905422	1905412	163mm 6-3/8"	150mm 6"		8	7600
1905522	1905512	163mm 6-3/8"	180mm 7"		8	7600
1905622	1905612	163mm 6-3/8"	230mm 9"		8	7600

Other sizes available upon request.

When ordering, add bore size to part no.
(ie. 1921022-112 for 1-1/2" Bore)



Grease fittings mounted on both ends of toolheads for easy access.

DESIGN:

- » High tensile steel body with 6, 8, 12 and 16 teeth
- » Available hook angle between 23° and 27°
- » With dual-chamber hydro-clamping to ensure precise concentricity tolerance
- » High radial running accuracy and low operating vibration

APPLICATION:

- » With HSS knives for planing solid woods without glue lines
- » With tungsten carbide tipped knives for planing hardwoods, exotic woods and solid woods with glue lines
- » When ordering, specify 'Bore Size' to 'Part No.' (i.e., 1925022-112 for 1-1/2" Bore)

MACHINE TYPE:

- » On moulders, conventional or high speed

PART NO.	DIAM. ØD	KERF B	BORE ØD	NO. TEETH	MAX. RPM
1921022	163mm 6-3/8"	150mm 6"	1-1/2", 1-13/16", 2-1/8" 40mm, 50mm	6	9300
1921222	163mm 6-3/8"	230mm 9"		6	9300
1921422	163mm 6-3/8"	260mm 10-1/4"		6	9300
1921622	163mm 6-3/8"	310mm 12-1/4"		6	9300
1922022	163mm 6-3/8"	150mm 6"	1-1/2", 1-13/16", 2-1/8" 40mm, 50mm	8	9300
1922222	163mm 6-3/8"	230mm 9"		8	9300
1922422	163mm 6-3/8"	260mm 10-1/4"		8	9300
1922622	163mm 6-3/8"	310mm 12-1/4"		8	9300
1923022	203mm 8"	150mm 6"	1-1/2", 1-13/16", 2-1/8" 40mm, 50mm, 60mm	8	7500
1923222	203mm 8"	230mm 9"		8	7500
1923422	203mm 8"	260mm 10-1/4"		8	7500
1923622	203mm 8"	310mm 12-1/4"		8	7500
1924022	203mm 8"	150mm 6"	1-1/2", 1-13/16", 2-1/8" 40mm, 50mm, 60mm	12	7500
1924222	203mm 8"	230mm 9"		12	7500
1924422	203mm 8"	260mm 10-1/4"		12	7500
1924622	203mm 8"	310mm 12-1/4"		12	7500

Continued to page C12...



...Continued from page C11

PART NO.	DIAM. ØD	KERF B	BORE ØD	NO. TEETH	MAX. RPM
1925022	203mm 8"	150mm 6"	1-1/2", 1-13/16", 2-1/8" 40mm, 50mm, 60mm	16	7500
1925222	203mm 8"	230mm 9"		16	7500
1925422	203mm 8"	260mm 10-1/4"		16	7500
1925622	203mm 8"	310mm 12-1/4"		16	7500

Other sizes available upon request.

When ordering, add bore size to part no.
(ie. 1921022-112 for 1-1/2" Bore)

REPLACEMENT PARTS

PART NO.	DESCRIPTION	PRODUCT
W500605	Screw for flanges M6 x 16mm	
W501810	Grease Nipple	
W501811	Release Valve	
1T463HP	Grease Gun	
W501602	Spring	
W400113	Wrench 3mm	
W400115	Wrench 5mm	



TOOLHEAD KERF	WEDGE PART NO.	WEDGE SCREW M10 X 20MM FOR Z = 6, 8 & 12 PART NO.	WEDGE SCREW M8 X 16MM FOR Z = 16 PART NO.
150mm 6"	W302014	W501409	W501403
230mm 9"	W302022	W501409	W501403
260mm 10-1/4"	W302025	W501409	W501403
310mm 12-1/4"	W302030	W501409	W501403

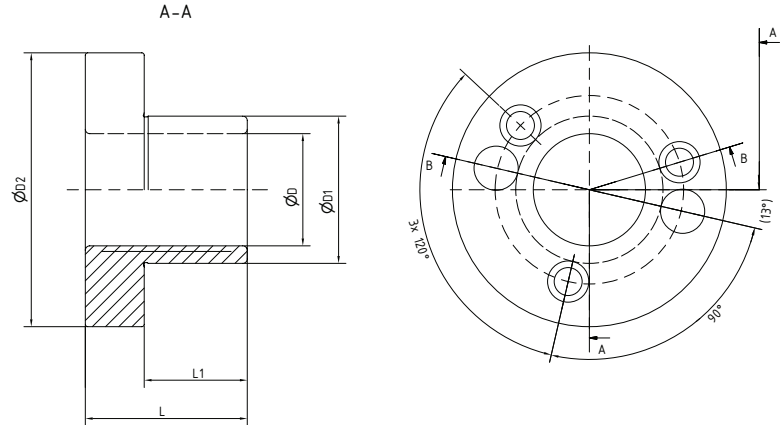
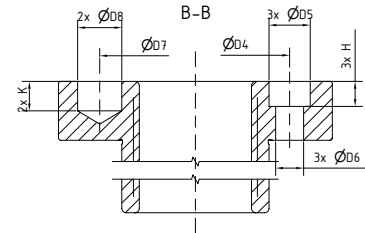


DESIGN:

- » High precision hydraulic sleeves
- » Manufactured to a G6 spindle tolerance and a H7 bore tolerance
- » Designed for light press fit against the tool
- » Tool is bolted to the sleeve's collar
- » When pressurized, the sleeve expands only against the spindle
- » Sleeve pressurized with a grease pump

APPLICATION:

- » For permanent mounting of tools or tool assemblies



PART NO.	BORE ØD	DIAM. ØD1 MM	D2 MM	D4 MM	D5 MM	D6 MM	D7 MM	D8 MM	H MM	K MM	L MM	L1 MM
A-40/60-55	40mm	60	93	74	14	9	75	15	8.5	10	55	35
A-45/60-55 ■	45mm	60	93	74	14	9	70	M8	8.5	-	55	35
A-45/60-75 ■	45mm	60	93	74	14	9	70	M8	8.5	-	75	55
A-50/60-55 ■	50mm	60	93	74	14	9	75	15	8.5	10	55	35
A-50/60-75 ■	50mm	60	93	74	14	9	75	15	8.5	10	55	55
A-60/70-55 ▲	60mm	70	105	85	14	9	85	15	9	10	55	35
A-1 1/4"/40-55 ●	1-1/4"	40	75	55	14	9	55	15	9	10	55	35
A-1 13/16"/60-55	1-13/16"	60	93	74	14	9	75	15	8.5	10	55	35
A-1 13/16"/65-55	1-13/16"	65	98	80	14	9	80	15	9	10	55	35
A-2 1/8"/65-55	2-1/8"	65	98	80	14	9	80	15	9	10	55	35

- Has two threaded M8-holes for carrier pegs, on a 70mm pitch diameter
- ▲ Has two threaded M8-holes for carrier pegs, on a 85mm pitch diameter
- Has two tool fastening holes

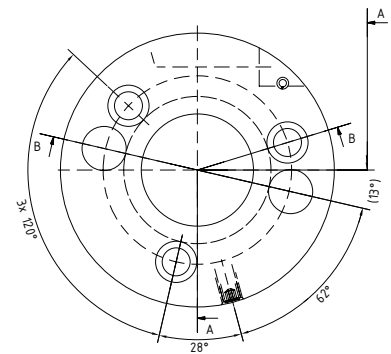
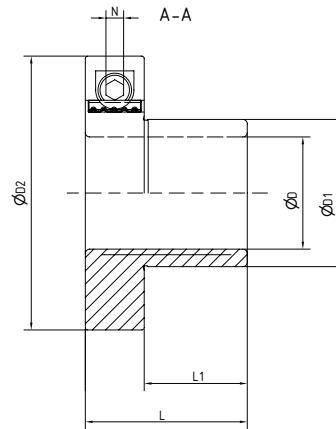
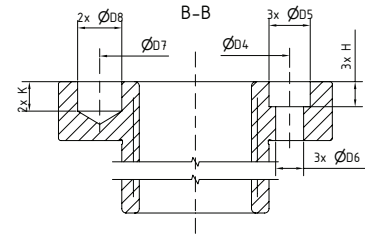


DESIGN:

- » High precision hydraulic sleeves
- » Manufactured to a G6 spindle tolerance and a H7 bore tolerance
- » Designed for light press fit against the tool
- » Tool is bolted to the sleeve's collar
- » When pressurized, the sleeve expands only against the spindle
- » Sleeve pressurized with a T-handle allen wrench
- » No grease pump required

APPLICATION:

- » For permanent mounting of tools or tool assemblies



PART NO.	BORE ØD	DIAM. ØD1 MM	D2 MM	D4 MM	D5 MM	D6 MM	D7 MM	D8 MM	H MM	K MM	L MM	L1 MM	N MM
AI-40/50-55	40mm	50	83	64	10	6	65	15	5.5	10	55	35	6
AI-40/60-55	40mm	60	93	74	14	9	75	15	8.5	10	55	35	6
AI-50/60-55 ■	50mm	60	93	74	14	9	75	15	8.5	10	55	35	6
AI-50/60-75 ■	50mm	60	93	74	14	9	75	15	8.5	10	75	55	6
AI-50/65-75 ■	50mm	65	98	80	14	9	80	15	8.5	10	75	55	6
AI-1 1/4"/40-55 ▲	1-1/4"	40	83	55	14	9	55	15	9	10	55	35	6
AI-1 1/2"/50-55	1-1/2"	50	93	65	14	9	65	15	8.5	10	55	35	6
AI-1 13/16"/60-55	1-13/16"	60	93	74	14	9	75	15	8.5	10	55	35	6
AI-2 1/8"/65-55	2-1/8"	65	98	80	14	9	80	15	8.5	10	55	35	6

■ Has two threaded M8 holes for carrier pegs on a 70mm pitch diameter

▲ Has two tool fastening holes



DESIGN:

- » High precision hydraulic sleeves provided with threaded and knurled ring nut
- » Manufactured to a G6 spindle tolerance and a H7 bore tolerance
- » Sleeves can be easily interchanged between tools
- » Tool is bolted to the sleeve's collar
- » When pressurized, the outer sleeve expands against the tool and the inner sleeve against the spindle
- » Sleeve pressurized by a grease pump

APPLICATION:

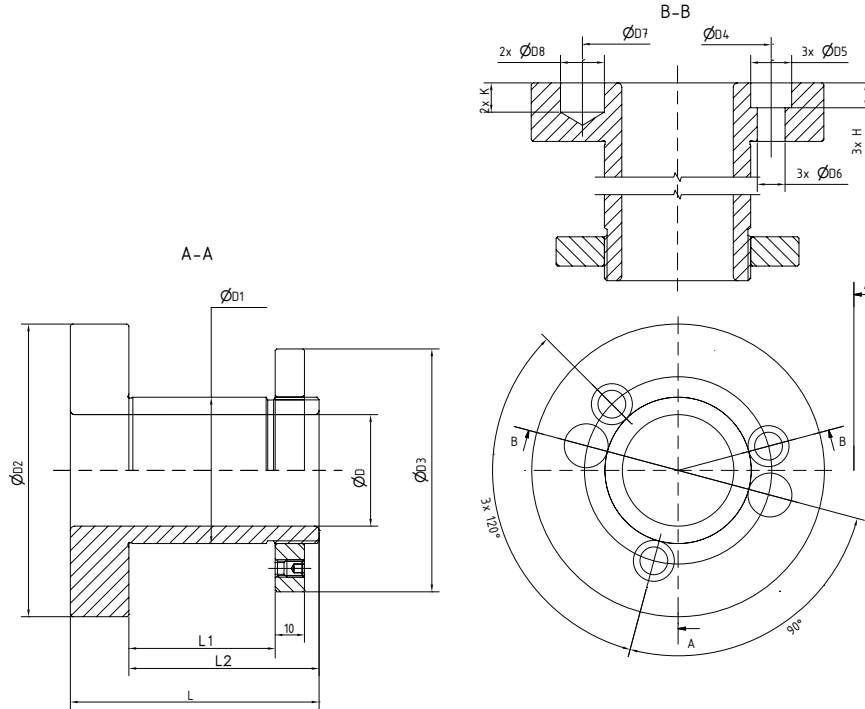
- » For interchangeable tools or tool assemblies

PART NO.	BORE ØD MM	DIAM. ØD1 MM	D2 MM	D3 MM	D4 MM	D5 MM	D6 MM	D7 MM	D8 MM	H MM	K MM	L MM	L1 MM	L2 MM
B-40/50-75	40	50	83	83	64	10	6	65	15	5.5	10	75	40	55
B-40/50-115	40	50	83	83	64	10	6	65	15	5.5	10	115	80	95
B-40/60-75	40	60	93	90	74	14	9	75	15	8.5	10	75	40	55
B-40/60-95	40	60	93	90	74	14	9	75	15	8.5	10	95	60	75
B-40/60-115	40	60	93	90	74	14	9	75	15	8.5	10	115	80	95
B-40/60-165	40	60	93	90	74	14	9	75	15	8.5	10	165	130	145
B-40/60-215	40	60	93	90	74	14	9	75	15	8.5	10	215	180	195
B-45/60-75 ■	45	60	93	90	74	14	9	70	M8	8.5	-	75	40	55
B-45/60-95 ■	45	60	93	90	74	14	9	70	M8	8.5	-	95	60	75
B-45/60-115 ■	45	60	93	90	74	14	9	70	M8	8.5	-	115	80	95
B-45/60-140 ■	45	60	93	90	74	14	9	70	M8	8.5	-	140	105	120
B-45/60-190 ■	45	60	93	90	74	14	9	70	M8	8.5	-	190	155	170
B-50/60-75 ■	50	60	93	90	74	14	9	75	15	8.5	10	75	40	55
B-50/60-95 ■	50	60	93	90	74	14	9	75	15	8.5	10	95	60	7
B-50/60-115 ■	50	60	93	90	74	14	9	75	15	8.5	10	115	80	95
B-50/60-140 ■	50	60	93	90	74	14	9	75	15	8.5	10	140	105	120
B-50/60-190 ■	50	60	93	90	74	14	9	75	15	8.5	10	190	155	170
B-50/60-240 ■	50	60	93	90	74	14	9	75	15	8.5	10	240	205	220
B-60/70-75 ▲	60	70	105	105	86	14	9	85	15	8.5	10	75	40	55
B-60/70-140 ▲	60	70	105	105	86	14	9	85	15	8.5	10	140	105	120
B-60/70-190 ▲	60	70	105	105	86	14	9	85	15	8.5	10	190	155	170

■ Sleeve has two threaded M8-holes for carrier pegs on a 70mm pitch diameter

▲ Sleeve has two threaded M8-holes for carrier pegs on a 85mm pitch diameter

Continued to page C16...



...Continued from page C15

PART NO.	BORE $\varnothing D$	DIAM. $\varnothing D1$ MM	$D2$ MM	$D3$ MM	$D4$ MM	$D5$ MM	$D6$ MM	$D7$ MM	$D8$ MM	H MM	K MM	L MM	L1 MM	L2 MM
B-1 1/2"/50-85	1-1/2"	50	83	83	64	14	9	64	15	8.5	10	85	50	65
B-1 1/2"/50-135	1-1/2"	50	83	83	64	14	9	64	15	8.5	10	135	100	115
B-1 1/2"/50-185	1-1/2"	50	83	83	64	14	9	64	15	8.5	10	185	150	165
B-1 13/16"/60-75	1-13/16"	60	93	90	74	14	9	75	15	8.5	10	75	40	55
B-1 13/16"/60-115	1-13/16"	60	93	90	74	14	9	75	15	8.5	10	115	80	95
B-1 13/16"/60-190	1-13/16"	60	93	90	74	14	9	75	15	8.5	10	190	155	170
B-1 13/16"/65-85	1-13/16"	65	98	98	80	14	9	80	15	8.5	10	85	50	65
B-1 13/16"/65-135	1-13/16"	65	98	98	80	14	9	80	15	8.5	10	135	100	115
B-1 13/16"/65-185	1-13/16"	65	98	98	80	14	9	80	15	8.5	10	185	150	165
B-2 1/8"/65-85	2-1/8"	65	98	98	80	14	9	80	15	8.5	10	85	50	65
B-2 1/8"/65-135	2-1/8"	65	98	98	80	14	9	80	15	8.5	10	135	100	115
B-2 1/8"/65-185	2-1/8"	65	98	98	80	14	9	80	15	8.5	10	185	150	165

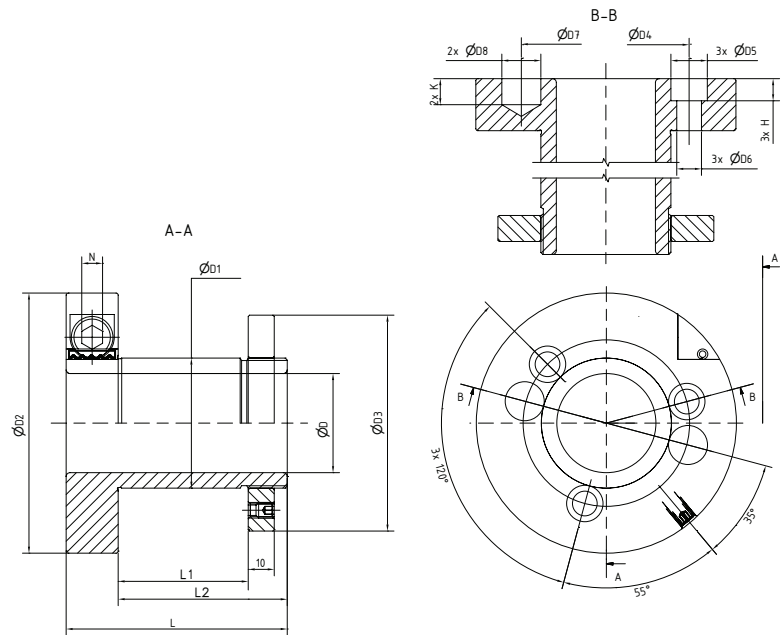


DESIGN:

- » High precision hydraulic sleeves provided with threaded and knurled ring nut
- » Manufactured to a G6 spindle tolerance and a H7 bore tolerance
- » Tool is bolted to the sleeve's collar
- » Sleeves can be easily interchanged between tools
- » When pressurized, the outer sleeve expands against the tool and the inner sleeve against the spindle
- » Sleeve pressurized by tightening a pressure screw with a T-handle allen wrench
- » No grease pump required

APPLICATION:

- » For interchangeable tools or tool assemblies



PART NO.	BORE ØD	DIAM. ØD1 MM	D2 MM	D3 MM	D4 MM	D5 MM	D6 MM	D7 MM	D8 MM	H MM	K MM	L MM	L1 MM	L2 MM	N MM
BI-40/50-75	40mm	50	100	83	64	14	9	65	15	8.5	10	75	40	55	8
BI-40/60-75	40mm	60	102	90	74	14	9	75	15	8.5	10	75	40	55	8
BI-40/60-95	40mm	60	108	90	74	14	9	75	15	8.5	10	95	60	75	8
BI-40/60-115	40mm	60	108	90	74	14	9	75	15	8.5	10	115	80	95	8
BI-50/60-75 ■	50mm	60	102	90	74	14	9	75	15	8.5	10	75	40	55	8
BI-50/60-95 ■	50mm	60	108	90	74	14	9	75	15	8.5	10	95	60	75	8
BI-50/60-115 ■	50mm	60	108	90	74	14	9	75	15	8.5	10	115	80	95	8
BI-1 1/2"/50-85	1-1/2"	50	106	83	64	14	9	65	15	8.5	10	85	50	65	8
BI-1 1/2"/50-135	1-1/2"	50	106	83	64	14	9	65	15	8.5	10	135	100	115	8
BI-1 13/16"/60-75	1-13/16"	60	102	90	74	14	9	75	15	8.5	10	75	40	55	8
BI-1 13/16"/60-115	1-13/16"	60	108	90	74	14	9	75	15	8.5	10	115	80	95	8
BI-1 13/16"/60-140	1-13/16"	60	108	90	74	14	9	75	15	8.5	10	140	105	120	8
BI-1 13/16"/65-85	1-13/16"	65	108	98	80	14	9	80	15	8.5	10	85	50	65	8
BI-2 1/8"/65-85	2-1/8"	65	108	98	80	14	9	80	15	8.5	10	85	50	65	8

■ BI Ø50 has two threaded M8-holes for carrier pegs on a 70mm pitch diameter

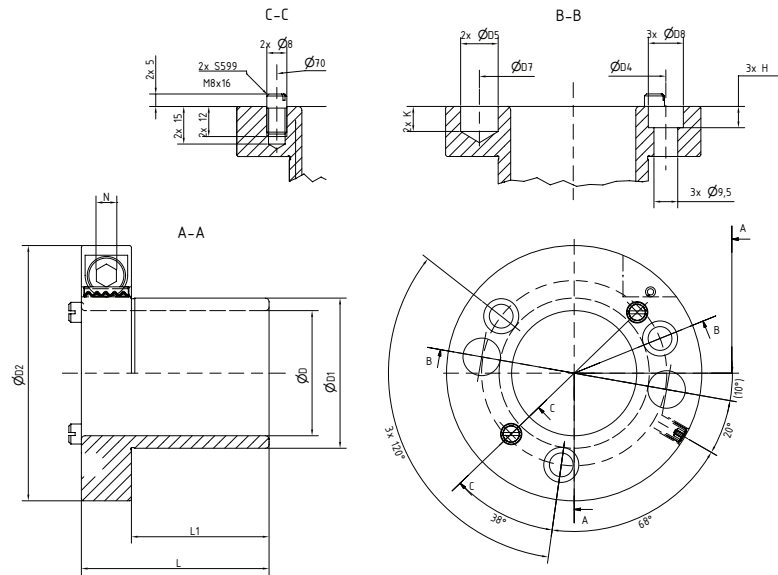


DESIGN:

- » High precision hydraulic sleeves
- » Manufactured to a G6 spindle tolerance and a H7 bore tolerance
- » Tool is bolted to the sleeve's collar
- » Sleeves can be easily interchanged between tools
- » When pressurized, the outer sleeve expands against the tool and the inner sleeve against the spindle
- » Sleeve pressurized by tightening a pressure screw with a T-handle allen wrench
- » No grease pump required

APPLICATION:

- » For interchangeable tools or tool assemblies



PART NO.	BORE ØD MM	DIAM. ØD1 MM	D2 MM	D4 MM	D5 MM	D6 MM	D7 MM	D8 MM	H MM	K MM	L MM	L1 MM	N MM
CI-40/50-75	40	50	100	64	14	9	65	15	8.5	10	75	55	8
CI-40/60-75	40	60	102	74	14	9	75	15	8.5	10	75	55	8
CI-40/60-95	40	60	108	74	14	9	75	15	8.5	10	95	75	8
CI-40/60-115	40	60	108	74	14	9	75	15	8.5	10	115	95	8
CI-40/60-140 ▲	40	60	114	74	14	9	75	15	8.5	10	140	115	10
CI-50/60-75 ■	50	60	102	74	14	9	75	15	8.5	10	75	55	8
CI-50/60-95 ■	50	60	108	74	14	9	75	15	8.5	10	95	75	8
CI-50/60-115 ■	50	60	108	74	14	9	75	15	8.5	10	115	95	8
CI-50/60-140 ▲	50	60	114	74	14	9	75	15	8.5	10	140	115	10

- CI Ø50 has two threaded M8-holes for carrier pegs on a 70mm pitch diameter
- ▲ The sleeve has two threaded M8-holes for carrier pegs on a 68mm pitch diameter

EI-40/60-92

**DESIGN:**

- » High precision hydraulic sleeves
- » Manufactured to a G6 spindle tolerance and a H7 bore tolerance
- » Tool is bolted to the sleeve's collar
- » Sleeve is supplied with an internal hexagonal insert in the collar
- » Sleeves can be easily interchanged between tools
- » When pressurized, the outer sleeve expands against the tool and the inner sleeve against the spindle
- » Sleeve pressurized by tightening a pressure screw with a T-handle allen wrench
- » No grease pump required

MACHINE TYPE:

- » For machines with hexagonal spindle profile

EI-40/80-92



EI2-40/60-96

**DESIGN:**

- » High precision hydraulic sleeves
- » Manufactured to a G6 spindle tolerance and a H7 bore tolerance
- » Tool is bolted to the sleeve's collar
- » Sleeves can be easily interchanged between tools
- » When pressurized, the outer sleeve expands against the tool and the inner sleeve against the spindle
- » Sleeve pressurized by tightening a pressure screw with a T-handle allen wrench
- » No grease pump required

APPLICATION:

- » For interchangeable tools or tool assemblies

MACHINE TYPE:

- » For machines with hexagonal spindle profile

EIS-40/60-92



DX10/DX11

CORRUGATED BACK KNIVES D2 STEEL



ADVANTAGES:

- » Resistant to chipping and nicks
- » Ideal for use where there is high moisture content
- » Resists chemical erosion found in such woods as cedar and redwood

DESIGN:

- » Solid D2 high carbon, high chrome steel
- » Precision ground serrations (60°, 1.6mm pitch) ensures tight and accurate positioning of knives onto toolheads

APPLICATION:

- » Used primarily in softwood production and short runs in hardwoods

PART NO.	LENGTH L	HEIGHT H	THICKNESS T
DX10114	25"	1-1/4"	1/4"
DX10112	25"	1-1/2"	1/4"
DX10134	25"	1-3/4"	1/4"
DX10200	25"	2"	1/4"
DX10214	25"	2-1/4"	1/4"
DX10212	25"	2-1/2"	1/4"
DX11112	25"	1-1/2"	5/16"
DX11134	25"	1-3/4"	5/16"
DX11200	25"	2"	5/16"
DX11214	25"	2-1/4"	5/16"
DX11212	25"	2-1/2"	5/16"
DX11234	25"	2-3/4"	5/16"
DX11300	25"	3"	5/16"

2610/2611

CORRUGATED BACK KNIVES M2 STEEL



ADVANTAGES:

- » Consistent hardness with high molybdenum content that allows for easy grinding
- » Higher wear resistance in harder materials
- » Retains edge in medium to long production runs

DESIGN:

- » Solid M2 high speed steel with 6% tungsten content
- » Precision ground serrations (60°, 1.6mm pitch) ensures tight and accurate positioning of knives onto toolheads

APPLICATION:

- » Used for longer runs than D2 in softwoods and hardwoods

PART NO.	LENGTH L	HEIGHT H	THICKNESS T
2610114	25"	1-1/4"	1/4"
2610112	25"	1-1/2"	1/4"
2610134	25"	1-3/4"	1/4"
2610200	25"	2"	1/4"
2610214	25"	2-1/4"	1/4"
2610212	25"	2-1/2"	1/4"
2611112	25"	1-1/2"	5/16"
2611134	25"	1-3/4"	5/16"
2611200	25"	2"	5/16"
2611214	25"	2-1/4"	5/16"
2611212	25"	2-1/2"	5/16"
2611234	25"	2-3/4"	5/16"
2611300	25"	3"	5/16"

**DESIGN:**

- » Solid T1 high speed steel with 18% tungsten content
- » Precision ground serrations (60°, 1.6mm pitch) ensures tight and accurate positioning of knives onto toolheads

APPLICATION:

- » Used for longer runs than M2 in softwoods and hardwoods

ADVANTAGES:

- » Higher wear resistance in harder materials due to increased tungsten content
- » Retains edge in long production runs

PART NO.	LENGTH L	HEIGHT H	THICKNESS T
2710114	25"	1-1/4"	1/4"
2710112	25"	1-1/2"	1/4"
2710134	25"	1-3/4"	1/4"
2710200	25"	2"	1/4"
2711112	25"	1-1/2"	5/16"
2711134	25"	1-3/4"	5/16"
2711200	25"	2"	5/16"
2711214	25"	2-1/4"	5/16"
2711212	25"	2-1/2"	5/16"
2711234	25"	2-3/4"	5/16"
2711300	25"	3"	5/16"

**DESIGN:**

- » Solid M2 steel with special coating
- » Precision ground serrations (60°, 1.6mm pitch) ensures tight and accurate positioning of knives onto toolheads

APPLICATION:

- » For surface planing and profiling soft and hardwoods

ADVANTAGES:

- » Up to 10 times longer cutting life
- » Superior surface finish
- » Increased cutting life dramatically reduces downtime
- » Cutting edge is more resistant to knots and exotic woods minimizing edge chipping
- » Reduces noise levels due to lower cutting resistance
- » Easy to grind using standard grinding wheels normally used for grinding HSS knives

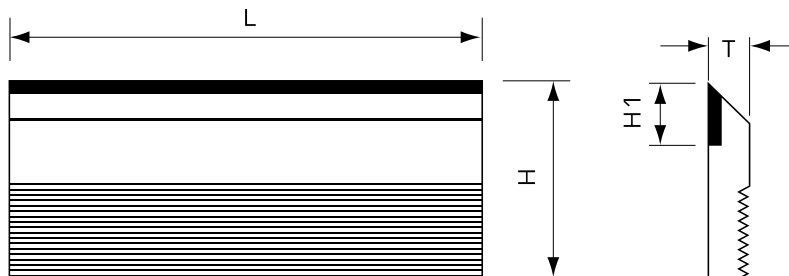
PART NO.	LENGTH L	HEIGHT H	THICKNESS T
2611112ST	25"	1-1/2"	5/16"
2611134ST	25"	1-3/4"	5/16"
2611200ST	25"	2"	5/16"
2611214ST	25"	2-1/4"	5/16"
2611212ST	25"	2-1/2"	5/16"
2611234ST	25"	2-3/4"	5/16"

DESIGN:

- » Solid HSS knives with brazed tungsten carbide inlay
- » Precision ground serrations (60°, 1.6mm pitch) ensures tight and accurate positioning of knives onto toolheads

APPLICATION:

- » For surface planing and profiling hardwoods, solid woods with glue lines, exotic woods and MDF



SPECIAL PRODUCTION SPECIAL PRODUCTION SPECIAL PRODUCTION SPECIAL PRODUCTION

CARBIDE INLAY (H1) OF: 14MM, 20MM			CARBIDE INLAY (H1) OF: 20MM, 25MM			CARBIDE INLAY (H1) OF: 25MM, 30MM, 35MM			CARBIDE INLAY (H1) OF: 30MM, 35MM		
L MM	H MM	T MM	L MM	H MM	T MM	L MM	H MM	T MM	L MM	H MM	T MM
40	40	10	40	50	10	40	60	10	40	70	10
50	40	10	50	50	10	50	60	10	50	70	10
60	40	10	60	50	10	60	60	10	60	70	10
70	40	10	70	50	10	70	60	10	70	70	10
80	40	10	80	50	10	80	60	10	80	70	10
90	40	10	90	50	10	90	60	10	90	70	10
100	40	10	100	50	10	100	60	10	100	70	10
120	40	10	120	50	10	120	60	10	120	70	10
130	40	10	130	50	10	130	60	10	130	70	10
150	40	10	150	50	10	150	60	10	150	70	10
170	40	10	170	50	10	170	60	10	170	70	10
180	40	10	180	50	10	180	60	10	180	70	10
200	40	10	200	50	10	200	60	10	200	70	10
210	40	10	210	50	10	210	60	10	210	70	10
230	40	10	230	50	10	230	60	10	230	70	10
260	40	10	260	50	10	260	60	10	260	70	10
310	40	10	310	50	10	310	60	10	310	70	10

DESIGN:

- » Solid HSS knives with brazed stellite inlay
- » Precision ground serrations (60°, 1.6mm pitch) ensures tight and accurate positioning of knives onto toolheads

APPLICATION:

- » For surface planing and profiling hardwoods
- » For solid wood with glue lines and exotic woods, see carbide inlay knives on page C23

**SPECIAL PRODUCTION**

L MM	H MM	T MM	H1 MM
40	55	10	25
50	55	10	25
60	55	10	25
80	55	10	25
100	55	10	25
130	55	10	25
150	55	10	25
165	55	10	25
180	55	10	25
210	55	10	25
230	55	10	25
260	55	10	25
300	55	10	25
310	55	10	25
350	55	10	25

SPECIAL PRODUCTION

L MM	H MM	T MM	H1 MM
40	60	10	32
50	60	10	32
60	60	10	32
80	60	10	32
100	60	10	32
130	60	10	32
150	60	10	32
165	60	10	32
180	60	10	32
210	60	10	32
230	60	10	32
260	60	10	32
300	60	10	32
310	60	10	32
350	60	10	32

SPECIAL PRODUCTION

L MM	H MM	T MM	H1 MM
40	70	10	45
50	70	10	45
60	70	10	45
80	70	10	45
100	70	10	45
130	70	10	45
150	70	10	45
165	70	10	45
180	70	10	45
210	70	10	45
230	70	10	45
260	70	10	45
300	70	10	45
310	70	10	45
350	70	10	45

COMBI-CUT

PRECISION TOOLS

» DESIGN

Separate TC knife and steel backing plate allows for:

- Faster profiling/grinding process at reduced costs
- Sharper cutting edges and better finishes
- Longer tool life
- Greater design options

» APPLICATION

For machining abrasive work piece materials on moulders:
MDF, hardwoods, coated chipboards, and fibre materials.

TC knives and backers available in 40, 50, 60, 80, 100, 120, 130, 150, 170, 180, 200, 210, 230mm length & 38, 50, 60mm knife height *Other sizes available upon request.*

- Knife blanks are face polished for maximum sharpness/cutting edge quality
- Serrations on TC knives allow for constant diameter after grinding
- Backers do not need to get touched for sharpening
- Greater profile depths, depending on knife height

Polished Finish



Part numbers and specifications on the back...



PART NO: SETS	L MM	H MM	T MM
3030S04038	40	38	10
3030S05038	50	38	10
3030S06038	60	38	10
3030S08038	80	38	10
3030S10038	100	38	10
3030S12038	120	38	10
3030S13038	130	38	10
3030S15038	150	38	10
3030S17038	170	38	10
3030S18038	180	38	10
3030S20038	200	38	10
3030S21038	210	38	10
3030S23038	230	38	10
3030S04050	40	50	10
3030S05050	50	50	10
3030S06050	60	50	10
3030S08050	80	50	10
3030S10050	100	50	10
3030S12050	120	50	10
3030S13050	130	50	10
3030S15050	150	50	10
3030S17050	170	50	10
3030S18050	180	50	10
3030S20050	200	50	10
3030S21050	210	50	10
3030S23050	230	50	10
3030S04060	40	60	10
3030S05060	50	60	10
3030S06060	60	60	10
3030S08060	80	60	10
3030S10060	100	60	10
3030S12060	120	60	10
3030S13060	130	60	10
3030S15060	150	60	10
3030S17060	170	60	10
3030S18060	180	60	10
3030S20060	200	60	10
3030S21060	210	60	10
3030S23060	230	60	10

PART NO: KNIVES ONLY	L MM	H MM	T MM
3030C04038	40	38	3.2
3030C05038	50	38	3.2
3030C06038	60	38	3.2
3030C08038	80	38	3.2
3030C10038	100	38	3.2
3030C12038	120	38	3.2
3030C13038	130	38	3.2
3030C15038	150	38	3.2
3030C17038	170	38	3.2
3030C18038	180	38	3.2
3030C20038	200	38	3.2
3030C21038	210	38	3.2
3030C23038	230	38	3.2
3030C04050	40	50	3.2
3030C05050	50	50	3.2
3030C06050	60	50	3.2
3030C08050	80	50	3.2
3030C10050	100	50	3.2
3030C12050	120	50	3.2
3030C13050	130	50	3.2
3030C15050	150	50	3.2
3030C17050	170	50	3.2
3030C18050	180	50	3.2
3030C20050	200	50	3.2
3030C21050	210	50	3.2
3030C23050	230	50	3.2
3030C04060	40	60	3.2
3030C05060	50	60	3.2
3030C06060	60	60	3.2
3030C08060	80	60	3.2
3030C10060	100	60	3.2
3030C12060	120	60	3.2
3030C13060	130	60	3.2
3030C15060	150	60	3.2
3030C17060	170	60	3.2
3030C18060	180	60	3.2
3030C20060	200	60	3.2
3030C21060	210	60	3.2
3030C23060	230	60	3.2

PART NO: BACKERS ONLY	L MM	H MM	T MM
3030A04038	40	35	7.1
3030A05038	50	35	7.1
3030A06038	60	35	7.1
3030A08038	80	35	7.1
3030A10038	100	35	7.1
3030A12038	120	35	7.1
3030A13038	130	35	7.1
3030A15038	150	35	7.1
3030A17038	170	35	7.1
3030A18038	180	35	7.1
3030A20038	200	35	7.1
3030A21038	210	35	7.1
3030A23038	230	35	7.1
3030A04050	40	47	7.1
3030A05050	50	47	7.1
3030A06050	60	47	7.1
3030A08050	80	47	7.1
3030A10050	100	47	7.1
3030A12050	120	47	7.1
3030A13050	130	47	7.1
3030A15050	150	47	7.1
3030A17050	170	47	7.1
3030A18050	180	47	7.1
3030A20050	200	47	7.1
3030A21050	210	47	7.1
3030A23050	230	47	7.1
3030A04060	40	57	7.1
3030A05060	50	57	7.1
3030A06060	60	57	7.1
3030A08060	80	57	7.1
3030A10060	100	57	7.1
3030A12060	120	57	7.1
3030A13060	130	57	7.1
3030A15060	150	57	7.1
3030A17060	170	57	7.1
3030A18060	180	57	7.1
3030A20060	200	57	7.1
3030A21060	210	57	7.1
3030A23060	230	57	7.1

L = Length
H = Height
T = Thickness

**DESIGN:**

- » Solid T1 steel (18% w) knives
- » Precision ground

APPLICATION:

- » For surface planing hardwoods
- » For exotic woods or solid woods with glue lines use tungsten carbide inlaid knives on pages C28 - C31

MACHINE TYPE:

- » On surface planers, jointers, four sided planers and moulders

Thin Planing Knives
Precision ground and sharpened
2501 HSS 18% W
Standard Dimensions

Special dimensions
Single piece production

2501 HSS 18% W

Priced per meter

For Lengths from 200 to 1000mm
(8" to 40")

- » 30 x 3mm (1-3/16" x 1/8")
- » 35 x 3mm (1-3/8" x 1/8")

Extra charges for other lengths on request.
Extra charges for knives with slots and holes on request.

PART NO.	DIMENSIONS - L X H X T	
	INCH	MM
25 120 303	4-3/4" x 1-3/16" x 1/8"	120 x 30 x 3
25 130 303	5-1/8" x 1-3/16" x 1/8"	130 x 30 x 3
25 150 303	6" x 1-3/16" x 1/8"	150 x 30 x 3
25 160 303	6-1/4" x 1-3/16" x 1/8"	160 x 30 x 3
25 170 303	6-3/4" x 1-3/16" x 1/8"	170 x 30 x 3
25 180 303	7" x 1-3/16" x 1/8"	180 x 30 x 3
25 210 303	8-1/4" x 1-3/16" x 1/8"	210 x 30 x 3
25 230 303	9" x 1-3/16" x 1/8"	230 x 30 x 3
25 260 303	10-1/4" x 1-3/16" x 1/8"	260 x 30 x 3
25 410 303	16" x 1-3/16" x 1/8"	410 x 30 x 3
25 510 303	20" x 1-3/16" x 1/8"	510 x 30 x 3
25 610 303	24" x 1-3/16" x 1/8"	610 x 30 x 3
25 640 303	25" x 1-3/16" x 1/8"	640 x 30 x 3
251066303	39-1/2" x 1-3/16" x 1/8"	1000 x 30 x 3
25 400 353	15-3/4" x 1-3/8" x 1/8"	400 x 35 x 3
25 410 353	16" x 1-3/8" x 1/8"	410 x 35 x 3
25 450 353	17-3/4" x 1-3/8" x 1/8"	450 x 35 x 3
25 500 353	19-5/8" x 1-3/8" x 1/8"	500 x 35 x 3
25 510 353	20" x 1-3/8" x 1/8"	510 x 35 x 3
25 600 353	23-5/8" x 1-3/8" x 1/8"	600 x 35 x 3
25 610 353	24" x 1-3/8" x 1/8"	610 x 35 x 3
25 630 353	24-3/4" x 1-3/8" x 1/8"	630 x 35 x 3
25 640 353	25" x 1-3/8" x 1/8"	640 x 35 x 3
251066353	39-1/2" x 1-3/8" x 1/8"	1000 x 35 x 3

**DESIGN:**

- » Solid M2 steel
- » Precision ground

APPLICATION:

- » For surface planing soft and hardwoods
- » For exotic woods or solid woods with glue lines, use tungsten carbide inlaid knives on pages C28 - C31

MACHINE TYPE:

- » On surface planers, jointers, four sided planers and moulders

Thin Planing Knives
Precision ground and sharpened
2602 HSS M2
Standard Dimensions

Special dimensions
Single piece production

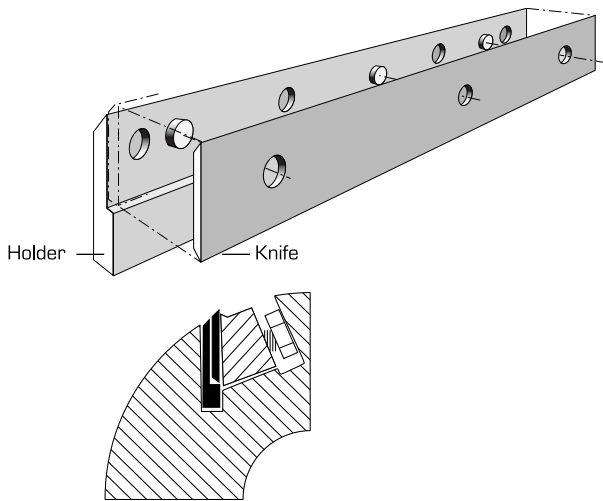
2602

Priced per meter - For lengths from
200 to 1000mm (8" to 40")

- » 30 x 3mm (1-3/16" x 1/8")
- » 35 x 3mm (1-3/8" x 1/8")

PART NO.	DIMENSIONS L X H X T (INCHES)
26040051	4" x 5/8" x 1/8"
26040071	4" x 7/8" x 1/8"
26051061	5-1/16" x 3/4" x 1/8"
26060051	6" x 5/8" x 1/8"
26060071	6" x 7/8" x 1/8"
26060101	6" x 1" x 1/8"
26061061	6-1/16" x 3/4" x 1/8"
26062051	6-1/8" x 3/4" x 1/8"
26068101	6-1/2" x 1" x 1/8"
26080051	8" x 5/8" x 1/8"
26080061	8" x 3/4" x 1/8"
26080071	8" x 7/8" x 1/8"
26080101	8" x 1" x 1/8"
26084121	8-1/4" x 1-1/4" x 1/8"
26120051	12" x 5/8" x 1/8"
26120061	12" x 3/4" x 1/8"
26120071	12" x 7/8" x 1/8"

PART NO.	DIMENSIONS L X H X T (INCHES)
26120101	12" x 1" x 1/8"
26121051	12-1/4" x 5/8" x 1/8"
26121061	12-1/4" x 3/4" x 1/8"
26121101	12-1/4" x 1" x 1/8"
26160101	16" x 1" x 1/8"
26180115	18" x 1-1/8" x 5/32"
26200101	20" x 1" x 1/8"
26240115	24" x 1-1/8" x 5/32"
26240145	24" x 1-1/2" x 5/32"
26250051	25" x 5/8" x 1/8"
26250061	25" x 3/4" x 1/8"
26250121	25" x 1-1/4" x 1/8"
26250125	25" x 1-1/4" x 5/32"
26300141	30" x 1-1/2" x 1/8"
26370111	37" x 1-1/8" x 1/8"
26370125	37" x 1-1/4" x 5/32"
26370131	37" x 1-3/8" x 1/8"
26370135	37" x 1-3/8" x 5/32"
26370145	37" x 1-1/2" x 5/32"


DESIGN:

- » Precision made knife holder for easy and accurate knife positioning
- » Precision ground reversible knives

APPLICATION:

- » For surface planing of solid wood
- » Can be fitted into any planing toolheads and jointer heads
- » On surface planers, jointers, four sided planers and moulders

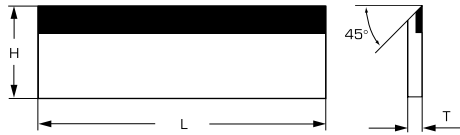
FOR PLANING HEADS & JOINTING HEADS

Reduction of cost is one of the major features of our double-edged knife system. The price of double-edged knives is lower than reusable knives, and the knife holder is a non-recurrent investment easily amortised by the savings of knife cost.

Knife cost is cut to 80% and set-up is decreased by 400%.
 More detailed instructions are available with separate brochure.

KNIFE LENGTH		KNIFE HOLDER 25x3mm / 1"x1/8"	DOUBLE EDGE KNIFE 18.6 x 1.0mm
MM	INCH	PART NO.	PART NO.
60	2-3/8"	29H060	299060
80	3-1/8"	29H080	299080
100	4"	29H100	299100
105	-	29H105	299105
120	4-3/4"	29H120	299120
125	-	29H125	299125
130	5-1/8"	29H130	299130
136	-	29H136	299136
140	-	29H140	299140
150	6"	29H150	299150
150 (3/4" H)	6" (3/4" H)	29H150-19	299150
160	6"	29H160	299160
170	-	29H170	299170
180	7"	29H180	299180
180 (3/4" H)	7" (3/4" H)	29H180-19	299180
186	-	29H186	299186
190	-	29H190	299190
190 (3/4" H)	7-1/2" (3/4" H)	29H190-19	299190
200	8"	29H200	299200
200 (3/4" H)	8" (3/4" H)	29H200-19	299200
210	8-1/4"	29H210	299210
230	9"	29H230	299230
240	-	29H240	299240
250	10"	29H250	299250
260	-	29H260	299260

KNIFE LENGTH		KNIFE HOLDER 25x3mm / 1"x1/8"	DOUBLE EDGE KNIFE 18.6 x 1.0mm
MM	INCH	PART NO.	PART NO.
300	-	29H300	299300
305	12"	29H305	299305
310	12-1/4"	29H310	299310
350	13-3/4"	29H350	299350
360	14-1/8"	29H360	299360
400	15-3/4"	29H400	299400
410	16-1/4"	29H410	299410
420	-	29H420	299420
430	-	29H430	299430
450	-	29H450	299450
460	18-1/8"	29H460	299460
500	-	29H500	299500
510	-	29H510	299510
520	-	29H520	299520
530	-	29H530	299530
600	-	29H600	299600
610	24"	29H610	299610
630	-	29H630	299630
640	-	29H640	299640
650	-	29H650	299650
660	-	29H660	299660
710	-	29H710	299710
740	-	29H740	299740
760	-	29H760	299760
810	-	29H810	299810

**DESIGN:**

- » Brazed tungsten carbide inlay
- » Tungsten carbide inlay ground to a polish surface finish

APPLICATION:

- » For surface planing hardwoods, exotic woods and solid woods with glue lines

The knives are ground flat, sharpened and honed with fine grit diamond wheels.

Especially suitable for: all hardwoods (particularly exotics), pressed wood, layered wood, hard paper, hardweave, and all laminated materials.

SPECIAL SIZES**Single Piece Production****Part No.: 3001 000 00**

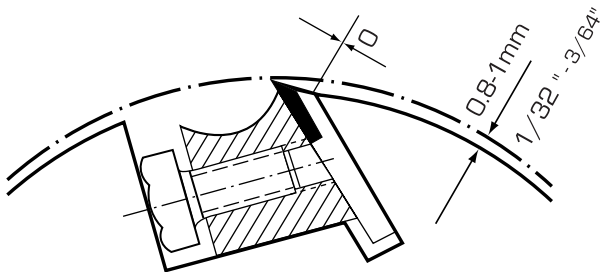
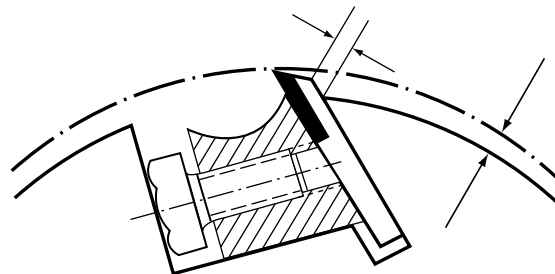
Length	(L)	100 to 810mm or 4" to 32"
Height	(H)	25, 30, 35mm or 1", 1-1/4", 1-1/8"
Thickness	(T)	3mm (1/8") and 4mm (5/32")

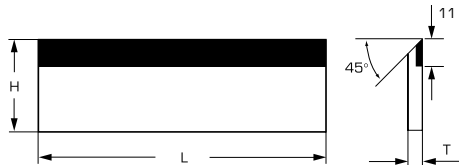
Thickness of Knife	(T)	=	2.8mm (7/64")	+	5% Surcharge
Thickness of Knife	(T)	=	2.5mm (3/32")	+	10% Surcharge
Thickness of Knife	(T)	=	4.0mm (5/32")	+	10% Surcharge
Height of Knife	(H)	=	40mm (1-1/2")	+	10% Surcharge
Height of Knife	(H)	=	Less than 25mm (1")	+	10% Surcharge

**INSTRUCTIONS FOR SETTING CARBIDE TIPPED
 KNIVES ONTO PLANING AND JOINTING HEADS:**

The cutting edge must not protrude more than 1.0mm, or 3/64", see sketches.

Correct setting: To protrude between 0.8 and 1.0mm (1/32" and 3/64").

CORRECT SETTING**INCORRECT SETTING**

**DESIGN:**

- » Brazed tungsten carbide inlay
- » Tungsten carbide inlay ground to a polished surface finish
- » Depth of tungsten carbide inlay 1.1mm

APPLICATION:

- » For surface planing hardwoods, exotic woods and solid woods with glue lines
- » The knives are ground flat, sharpened and honed with fine grit diamond wheels
- » Especially suitable for: all hardwoods (particularly exotics), pressed wood, layered wood, hard paper, hardweave and all laminated materials

Height = 25MM

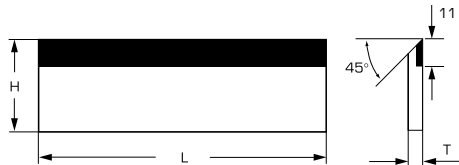
PART NO.	DIMENSIONS L X H X T (MM)
30 060 253	60 x 25 x 3
30 080 253	80 x 25 x 3
30 090 253	90 x 25 x 3
30 100 253	100 x 25 x 3
30 110 253	110 x 25 x 3
30 120 253	120 x 25 x 3
30 130 253	130 x 25 x 3
30 140 253	140 x 25 x 3
30 150 253	150 x 25 x 3
30 180 253	180 x 25 x 3
30 200 253	200 x 25 x 3
30 210 253	210 x 25 x 3
30 230 253	230 x 25 x 3
30 250 253	250 x 25 x 3
30 260 253	260 x 25 x 3
30 300 253	300 x 25 x 3
30 310 253	310 x 25 x 3
30 350 253	350 x 25 x 3
30 410 253	410 x 25 x 3
30 510 253	510 x 25 x 3

Height = 30MM

PART NO.	DIMENSIONS L X H X T (MM)
30 060 303	60 x 30 x 3
30 080 303	80 x 30 x 3
30 090 303	90 x 30 x 3
30 100 303	100 x 30 x 3
30 110 303	110 x 30 x 3
30 120 303	120 x 30 x 3
30 130 303	130 x 30 x 3
30 140 303	140 x 30 x 3
30 150 303	150 x 30 x 3
30 160 303	160 x 30 x 3
30 170 303	170 x 30 x 3
30 180 303	180 x 30 x 3
30 200 303	200 x 30 x 3
30 210 303	210 x 30 x 3
30 230 303	230 x 30 x 3
30 240 303	240 x 30 x 3
30 250 303	250 x 30 x 3
30 260 303	260 x 30 x 3
30 300 303	300 x 30 x 3
30 310 303	310 x 30 x 3
30 350 303	350 x 30 x 3
30 400 303	400 x 30 x 3
30 410 303	410 x 30 x 3
30 450 303	450 x 30 x 3
30 500 303	500 x 30 x 3
30 510 303	510 x 30 x 3
30 600 303	600 x 30 x 3
30 610 303	610 x 30 x 3
30 630 303	630 x 30 x 3
30 640 303	640 x 30 x 3
30 710 303	710 x 30 x 3
30 810 303	810 x 30 x 3

Height = 35MM

PART NO.	DIMENSIONS L X H X T (MM)
30 060 353	60 x 35 x 3
30 080 353	80 x 35 x 3
30 090 353	90 x 35 x 3
30 100 353	100 x 35 x 3
30 120 353	120 x 35 x 3
30 130 353	130 x 35 x 3
30 150 353	150 x 35 x 3
30 170 353	170 x 35 x 3
30 180 353	180 x 35 x 3
30 200 353	200 x 35 x 3
30 210 353	210 x 35 x 3
30 230 353	230 x 35 x 3
30 250 353	250 x 35 x 3
30 260 353	260 x 35 x 3
30 300 353	300 x 35 x 3
30 310 353	310 x 35 x 3
30 350 353	350 x 35 x 3
30 400 353	400 x 35 x 3
30 410 353	410 x 35 x 3
30 450 353	450 x 35 x 3
30 500 353	500 x 35 x 3
30 510 353	510 x 35 x 3
30 600 353	600 x 35 x 3
30 610 353	610 x 35 x 3
30 630 353	630 x 35 x 3
30 640 353	640 x 35 x 3
30 710 353	710 x 35 x 3
30 810 353	810 x 35 x 3


DESIGN:

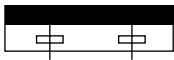
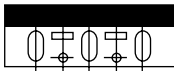
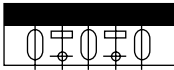


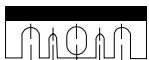

- » Brazed tungsten carbide inlay
- » Tungsten carbide inlay ground to a polished surface finish
- » Depth of tungsten carbide inlay 7.5mm for knives 5/8 height, all others supplied with 11mm inlay

APPLICATION:

- » For surface planing hardwoods, exotic woods and solid woods with glue lines
- » The knives are ground flat, sharpened and honed with fine grit diamond wheels
- » Especially suitable for: all hardwoods (particularly exotics), pressed wood, layered wood, hard paper, hardweave and all laminated materials

PART NO.	DIMENSIONS L X H X T (MM)
30040051	4" x 5/8" x 1/8"
30040071	4" x 7/8" x 1/8"
30051061	5-1/16" x 3/4" x 1/8"
30060051	6" x 5/8" x 1/8"
30060061	6" x 3/4" x 1/8"
30060071	6" x 7/8" x 1/8"
30060101	6" x 1" x 1/8"
30061061	6-1/16" x 3/4" x 1/8"
30062071	6-1/8" x 3/4" x 1/8"
30068101	6-1/2" x 1" x 1/8"
30080051	8" x 5/8" x 1/8"
30080061	8" x 3/4" x 1/8"
30080071	8" x 7/8" x 1/8"
30080101	8" x 1" x 1/8"
30084121	8-1/4" x 1-1/4" x 1/8"
30120051	12" x 5/8" x 1/8"
30120061	12" x 3/4" x 1/8"
30120071	12" x 7/8" x 1/8"
30120101	12" x 1" x 1/8"
30121051	12-1/4" x 5/8" x 1/8"
30121061	12-1/4" x 3/4" x 1/8"
30121101	12-1/4" x 1" x 1/8"
30122071	12-1/2" x 15/16" x 1/8"

PART NO.	DIMENSIONS L X H X T (MM)
30131065	13-1/8" x 1-1/16" x 5/32"
30141061	14-1/8" x 3/4" x 1/8"
30180115	18" x 1-1/8" x 5/32"
30190061	19" x 1-1/16" x 1/8"
30200101	20" x 1" x 1/8"
30240115	24" x 1-1/8" x 5/32"
30240145	24" x 1-1/2" x 5/32"
30250051	25" x 5/8" x 1/8"
30250061	25" x 3/4" x 1/8"
30250121	25" x 1-1/4" x 1/8"
30250125	25" x 1-1/4" x 5/32"
30300141	30" x 1-1/2" x 1/8"

MACHINE	SHAPE	MODEL	DIMENSIONS	L X W X T MM	CARBIDE PART NO.	HSS PART NO.
AEG		HTH 75		76 x 20 x 3	3076203	2076203
		EH 82 H 822		82 x 18 x 3	3082183	2082183
BLACK & DECKER			3-1/4" x 1-1/8" x 1/8"	82 x 29 x 3	3082293	2082293
MAKITA		1900 B 1923 B 1100 1125 1001	3-1/4" x 1-1/8" x 1/8"	82 x 29 x 3	3M82293	2M82293
		1911 B	4-3/8" x 1-1/8" x 1/8"	110 x 29 x 3	3110293	2110293
		1805 1805 N 1805 B	6-1/16" x 1-1/4" x 1/8"	155 x 32 x 3	3155323	2155323
		1806 B	6-11/16" x 1-3/8" x 1/8"	170 x 35 x 3	3170353	2170353
SKIL		60506	3" x 1-1/8" x 1/8"	77 x 28.6 x 3.15	3077283	2077283
		96 H	3-1/4" x 1-1/8" x 1/8"	82 x 29 x 3	3S82293	2S82293
HITACHI		F20A FU20 FP20	3-1/4" x 1-7/64" x 1/8"	82 x 28 x 3	3082283	2082283
		F30A	3-5/8" x 1-3/16" x 1/8"	92 x 30 x 3	3092303	2092303
		F50A	6-9/64" x 1-7/32" x 1/8"	156 x 31 x 3	30156313	20156313
		F1000A P100F	12-1/2" x 1-3/8" x 5/32"	317 x 35 x 4	30317354	20317354
		F1000	6-5/16" x 1-3/8" x 5/32"	160 x 35 x 4	30160354	20160354